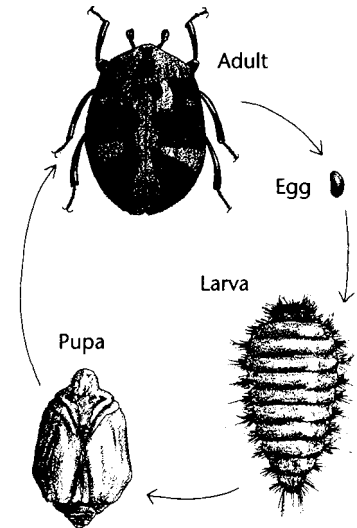


## CARPET BEETLES

**Description:** The two most common carpet beetles are the varied carpet beetle, *Anthrenus verbasci*, and the black carpet beetle, *Attagenus megatoma*. The adults of both species are oval-shaped and about 1/8 inch long. Varied carpet beetles are mottled with white, yellow brown or black. Black carpet beetles are black. Larvae of both beetles are about 1/4 inch long, yellow to brown, and are covered with bristles.

**Damage:** Carpet beetle adults and larvae both chew holes in carpets, fabric and other materials, but larvae do the greatest amount of damage. Damage is likely to be concentrated in one area rather than scattered throughout material. Carpet beetles feed on a large variety of hosts: carpets, wool, skins, furs, stuffed animals, book bindings, horns, grains, pet foods, upholstered furniture, flour, pollen (especially *Spirea*) cocoa, insect collections, and many others.



The larvae shed their skins as they mature. Presence of these bristly “shells” is an indication of infestation.

### Prevention:

- Proper storage methods. Store only clean materials. Store items in sealable containers.
- Frequent vacuuming and dusting. Clean under heavy furniture regularly.
- Since adult beetles are attracted to pollen, examine cut flowers and flowering plants before bringing them into the house. Remove beetles if present.

### Control:

- Locate source of infestation.
- Dispose of infected material if appropriate.
- Thoroughly clean area.
- Treat area with pyrethrin sprays (includes other synthetics such as allethrin, resmethrin, sumithrin, tetramethrin).
- Do not spray any consumable materials.
- Be sure sprays are registered for indoor use.
- Read and follow label instructions.

---

Cooperating Agencies: Washington State University, U.S. Department of Agriculture, and Spokane County.  
WSU Extension programs and policies are consistent with federal and state laws and regulation on nondiscrimination regarding race, color, gender, national origin, religion, age, disability, and sexual orientation.  
Evidence of noncompliance may be reported through your local Extension office.

---